



# Swanton Abbott Primary School

01692 538246



office-swantonabbott@coastaltogether.co.uk



Youngman Lanes, Swanton Abbott, Norwich, NR10 5DZ



AIM Federation: Small schools, big opportunities

Dear families of KS2 children,

We are thrilled to inform you that we have planned an exciting trip for our KS2 pupils on **Thursday 7th November 2024!** This trip, to Gressenhall Workhouse, promises to be a fantastic learning opportunity for your children, filled with fun activities and new experiences that embed the learning that has taken place in class.

The details of the trip are as follows:

- **Date:** Thursday 7th November 2024
- **Transport:** A bus will depart from school and return within normal school hours (9:00 AM – 3:15 PM).
- **Cost:** The total cost of the trip is £14.40 (or £7.20 for those children receiving Pupil Premium), which includes transportation, entry fees, and all activities. Payment can be made via School Money by Thursday 24th October, 2024. Please make sure you tick the **consent box** when paying via School Money.
- **What to bring (please see attached ideas):** We kindly ask that children bring a packed lunch and a water bottle.
- **What to wear (please see attached ideas):** We strongly recommend children come dressed in Victorian dress with comfortable shoes. Children will also need to bring warmer layers incase it is cold (a coat for on top of shawls!)



We are looking forward to a fantastic day of discovery and fun!

If you have any questions, feel free to contact the school office or speak with myself.

Thank you for your continued support.

Kind regards,

**Fiona Russell**

Head of School

# Victorian costume and lunch ideas

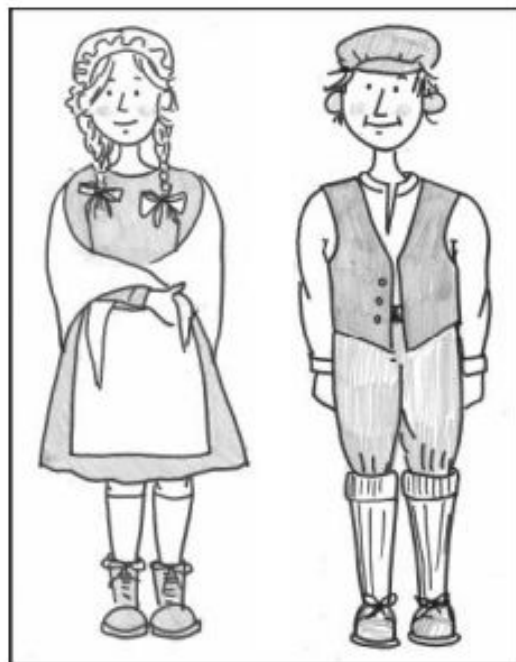
To make the day more immersive, the children might like to dress as Victorians. Here are some ideas to help.

If the weather is cold, please bring a coat with you. Don't worry, it doesn't have to look Victorian!

## Clothes

### Girls

- Bonnet, scarf, or straw hat
- Hair worn loose or in plaits
- Hair tied with ribbon
- Plain knee or calf length dress (or a skirt and top)
- Plain white apron
- Shawl or wide scarf drawn over head or shoulders
- Long socks or thick, plain tights
- Stout dark shoes or boots



### Boys

- Flat cap
- Handkerchief or scarf tied at neck
- Old shirt with the collar cut off or tucked inside
- Grey or black trousers tucked into long socks, 'school' shorts, or cut down old trousers
- Button up waistcoat
- Long socks
- Stout dark shoes or boots

## Lunch

You might like to consider bringing a Victorian lunch to eat. In a time before supermarkets and fast food, there were no crisps or plastic wrapped chocolates or biscuits! Food could be brought wrapped in a cloth (or a tea towel), a basket, a brown paper bag or in a tin rather than in a plastic lunchbox. Food to include could be:

- \*thick sliced cheese sandwich
- \* bread and jam
- \* pickled onions
- \*cooked ham
- \*boiled egg
- \*fruit
- \* gingerbread biscuits
- \*shortbread
- \*fruit cake
- \*jam tart
- \*'traditional' lemonade
- \*ginger beer